

## How to Install Custom Metal Blinds – Hidden Bracket

---

Before you begin your installation:

### READ ALL INSTALLATION INSTRUCTIONS!

- Make sure that you have all tools and hardware needed for installation.
  - Check the installation surface (wall, ceiling, or window frame) to ensure that you have suitable fasteners and tools for the material.
  - Double check the headrail and blinds for proper width and length. If you are installing several sets of blinds, be sure to match them with the appropriate window.
  - Check the parts list shipped with the product to confirm that you have the correct number of brackets.
- 

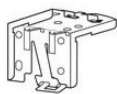
### TOOLS YOU MAY NEED (NOT INCLUDED):

- Tape Measure
  - Level
  - Pencil
  - Flat-blade or Philips Head Screwdriver
  - 1/4" Nutdriver
  - Drill with Bits
  - Drywall Anchors
  - Safety glasses
  - Ladder
- 

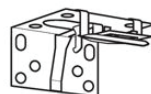
### STEP 1

#### Mounting Brackets

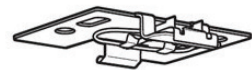
There are different types of mounting brackets, depending on the headrail size and style. However, all types shown below work in a similar manner.



Style 1



Style 2



Style 3 (Inside Mount Only)

---

### STEP 2

#### Optional extension brackets

If your blinds include optional extension brackets, temporarily assemble them to the mounting brackets at this time. You will need to use the extension brackets to determine mounting hole locations in Steps 3 and 4.

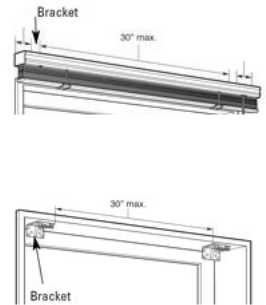
Refer to the included instructions for your style of extension brackets.

---

## STEP 3

Mark the bracket locations — inside-mount installation

- Position one bracket as close as possible to each end of the headrail, making sure the brackets will not interfere with the cord mechanism or other internal headrail parts.
- When using a single center support bracket, center it between the ends. For more than one center support bracket, space the support brackets evenly, not more than 30" apart. Make sure the brackets will not interfere with the cord mechanism or any other internal parts.
- Using the included template as a guide, mark the bracket mounting hole locations, making sure they are square and equally spaced. For outside mount installations, use a spirit level to check for levelness.

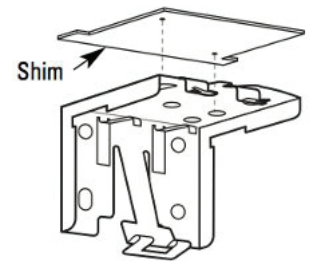


## STEP 4

Optional Bracket Shims for Inside Mount

To properly engage the headrail on inside mount installations, some bracket styles require up to 1/4" between the headrail locking tabs and the mounting surface. If needed, use the included shims to ensure the necessary spacing.

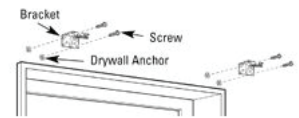
- Separate the shims.
- Align the shim(s) and mark with the mounting holes used for marking bracket locations in Step 3.
- Drill through-holes at the marked locations



## STEP 5A

Install the brackets — outside-mount installation

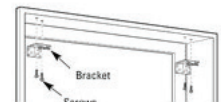
If mounting into drywall or plaster, use 3/16" drill bit and insert wall anchors before inserting screws. Use two screws per bracket.



## STEP 5B

Install the brackets — inside-mount installation

Example: Installation in a wood window frame using the included screws. Use two screws per bracket.

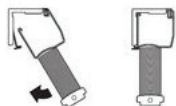


## STEP 6

Attaching the head rail to the mounting brackets

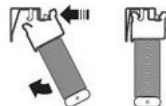
### Style 1

- Fit the front lip of the headrail over the hook on the front of the bracket.
- Roll the back of the headrail up until the back clips of the bracket lock into place with a "click." Be careful not to clip the top slat when attaching the headrail to the mounting brackets.



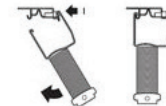
### Style 2

- Hold the back of the headrail against inner top of the bracket.
- Pressing back on the headrail, roll the back of the headrail up until the back clips of the bracket lock into place with a "click."



### Style 3

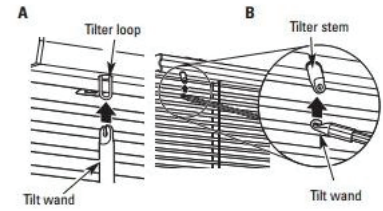
- Fit the front lip of the headrail over the spring-loaded ledge on the front of the bracket.
- Pressing back on the headrail, roll the back of the headrail up until the back lip of the headrail catches on the back lip of the bracket.



## STEP 7

Attach the tilt wand

- Remove the protective rubber cap from the tilt mechanism on the headrail.
- For models with a tilter loop (A)
  - Clip the end of the wand onto the tilter loop.
- For models with a tilter stem (B)
  - Hook the end of the wand through the hole in the tilter stem
- Rotate the tilt wand in each direction to ensure proper operation.

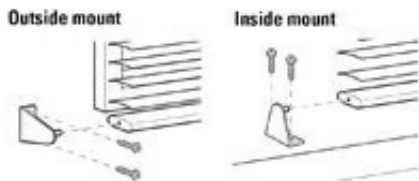


## STEP 8

Attach optional hold-down brackets (on some styles)

### Type 1 — One-Piece Hold-Down Brackets

- With the hold-down brackets attached to the bottom rail, lower the blinds to the hold-down bracket mounting surface and mark the bracket locations.
- Attach the hold-down brackets at the bottom of the window with the included screws, as shown for your installation type.
- To attach the bottom rail, gently pull the brackets out slightly and insert the pins into the holes on the bottom rail of the blinds.



### Type 2 — Two-Piece Hold-Down Brackets

- Press the rounded end of the hold-down pins into the hole at each end of the bottom rail. The other end will hook into the hold-down brackets.
- **NOTE:** Some styles may have the hold-down pins built into the bottom rail.
- With the hold-down brackets attached to the bottom rail, lower the blinds to the hold-down bracket mounting surface and mark the location of the bracket.
- Attach the hold-down brackets at the bottom of the window with the included screws, as shown for your installation type.
- Attach the bottom rail hold-down pins to the bracket.

